



# EMT-Paramedic Treatment Protocol 4204

**Cardiac ALS Treatment (CAT)**

**Page 1 of 2**

This protocol outlines the Universal Cardiac ALS Treatment (CAT) Algorithm. When directed by a protocol to “Perform CAT”, this protocol should be performed in conjunction with the remaining procedures outlined in each individual treatment protocol.

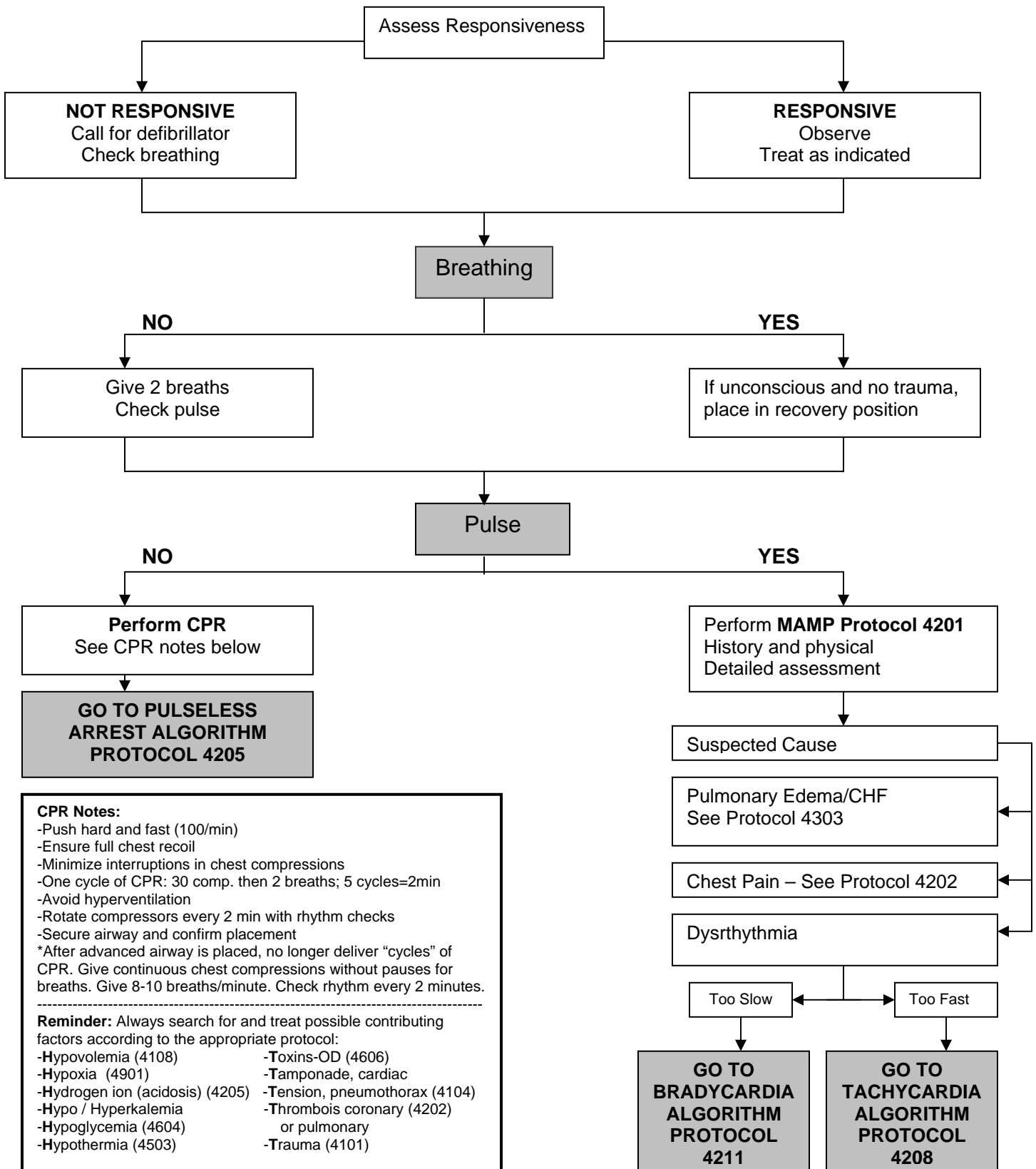
**See Next Page for Algorithm.**



# EMT-Paramedic Treatment Protocol 4204

## Universal Cardiac ALS Treatment (CAT) Algorithm

Page 2 of 2



### CPR Notes:

- Push hard and fast (100/min)
- Ensure full chest recoil
- Minimize interruptions in chest compressions
- One cycle of CPR: 30 comp. then 2 breaths; 5 cycles=2min
- Avoid hyperventilation
- Rotate compressors every 2 min with rhythm checks
- Secure airway and confirm placement
- \*After advanced airway is placed, no longer deliver "cycles" of CPR. Give continuous chest compressions without pauses for breaths. Give 8-10 breaths/minute. Check rhythm every 2 minutes.

**Reminder:** Always search for and treat possible contributing factors according to the appropriate protocol:

- |                                 |                               |
|---------------------------------|-------------------------------|
| -Hypovolemia (4108)             | -Toxins-OD (4606)             |
| -Hypoxia (4901)                 | -Tamponade, cardiac           |
| -Hydrogen ion (acidosis) (4205) | -Tension, pneumothorax (4104) |
| -Hypo / Hyperkalemia            | -Thrombosis coronary (4202)   |
| -Hypoglycemia (4604)            | or pulmonary                  |
| -Hypothermia (4503)             | -Trauma (4101)                |